

CERTIFIED LAND CORNER RECORDATION

DESCRIPTION OF CORNER EVIDENCE FOUND, AND ORIGINAL RECORD (if known)

LOCATION

¼ cor. 16 | 15

T 14 N, R 66 W
6th P.M.

Found 120 D spike @ corner.

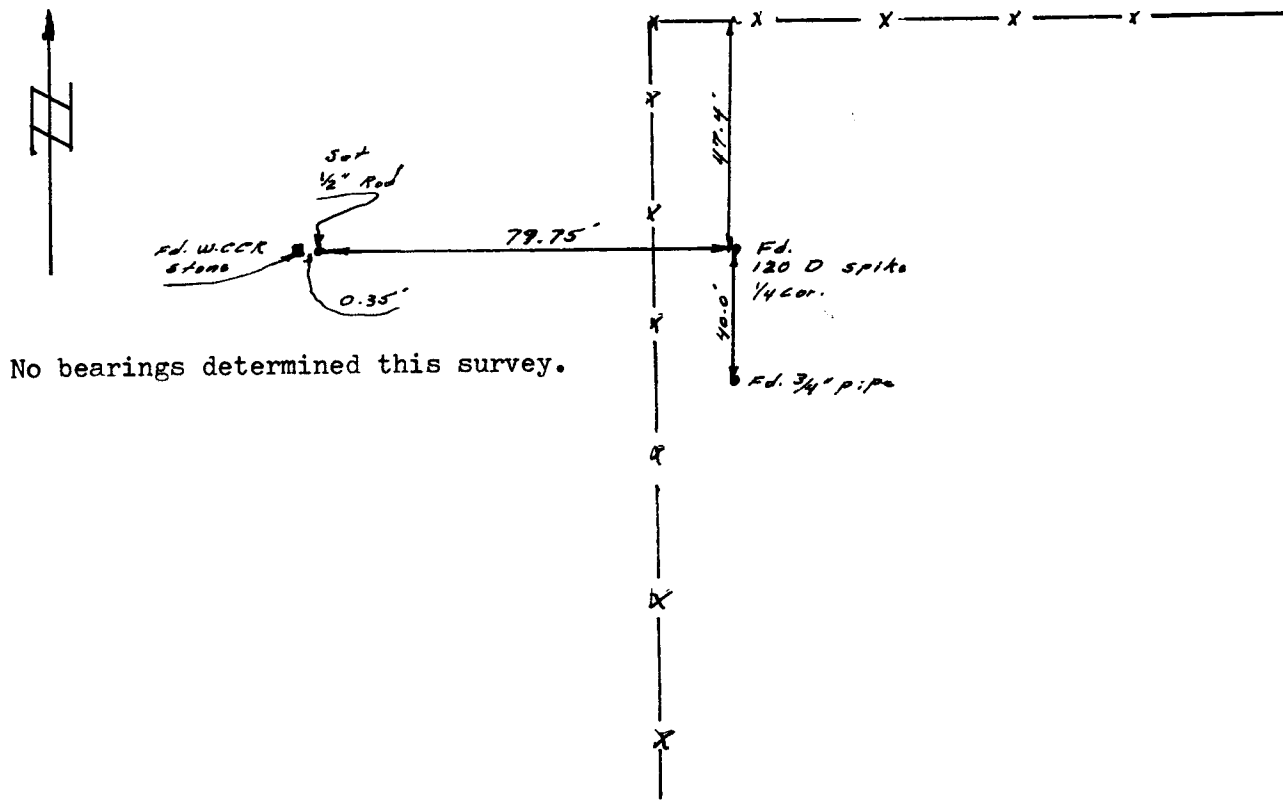
G.L.O.. record - unknown.

DESCRIPTION OF MONUMENT AND ACCESSORIES ESTABLISHED
TO PERPETUATE THE ORIGINAL LOCATION OF THIS CORNER:

Left 120 D spike @ corner.

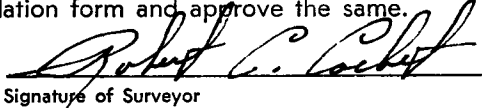
Set ½" rod next to W C C R stone and witnessed corner to said rod and ¾" pipe found to south.

SKETCH, WITH COURSE AND DISTANCE TO ADJACENT CORNER IF DETERMINED IN THIS SURVEY.
(May Sketch or Paste Reproduction on Reverse Side.)



No bearings determined this survey.

I, Robert C. Corbet certify that I have carefully performed or reviewed the work done on the diagrammed corner as reported on this recordation form and approve the same.


 Signature of Surveyor 495
Registration No.

STATE OF WYOMING,
Office of Clerk and Recorder,
County of Taramie

This "corner record" was filed for record on the 6 day of January, 1974, was noted on the cross-index plat and is assigned page No. _____, in book No. _____.


 County Official

Cross Index No. <u>L13</u>	T. <u>14</u>	R. <u>66</u>	<u>6</u> Mer.
_____	T. _____	R. _____	Mer.
_____	T. _____	R. _____	Mer.
_____	T. _____	R. _____	Mer.
_____	T. _____	R. _____	Mer.
_____	T. _____	R. _____	Mer.
_____	T. _____	R. _____	Mer.

Photographed ✓
 Indexed BB
 Posted ✓
 Assessor ✓

The State of Wyoming }
 County of Laramie } ss

This instrument was filed for record
 at 128 o'clock P.M. on the
6 day of January

A. D. 19 75 and duly recorded in
 Book _____ on page _____

Walter C. Whithead

County Clerk & Ex-Officio Registrar of Deeds
WB
 Deputy